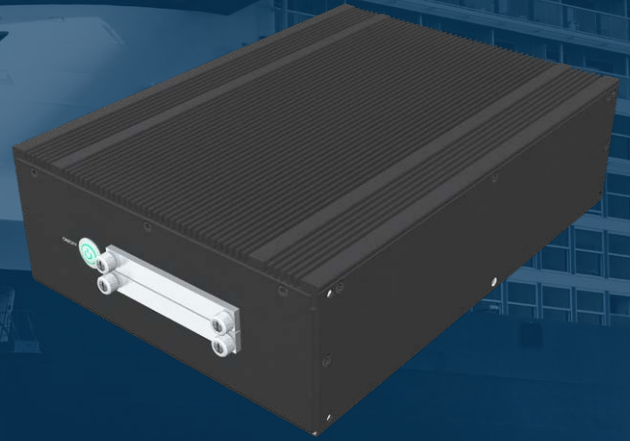


## Computer & Server

Combining state of the art technology with over 30 years of industry-specific experience and expertise, the product range of HATTELAND® computers boasts excellent performance, ruggedness and durability in harsh maritime environments.

Designed to withstand the hazards of maritime conditions, our DNV-approved, IEC 60945 certified industrial computers will provide stability and dependability when operating in environments where fluctuating temperatures, shock and vibrations, humidity and corrosion poses a risk.



### Features



Fanless



Extended  
Temperature



High  
Speed



High  
Performance CPU



Rugged



IoT  
Enabled



EN60945



### Form Fit

Form fit system hardware ensures that components may be exchanged seamlessly throughout the life span of a ship – whether due to component errors and repairs, or upgrades to keep pace with technological advancements – without the need for a system redesign.

This reduces the time and cost of hardware replacement and system upgrades.



### Lifecycle Management

Lifecycle management guarantees the continued production and delivery of industrial-grade embedded components in a ship's critical systems.

By choosing a hardware partner that provides lifecycle management you ensure that all networking, data processing, and display hardware and software will be supported throughout 7 years.



### Backward Compatibility

Backward compatibility eliminates the risk of a software image becoming outdated and unusable due to hardware upgrades.

By integrating backward compatible, marine approved and providing support for all communication modules (i.e. serial bus, ethernet, rich I/O and modular), new and old, as well as a range of previous OS releases, you extend the life span of your system.

# Computer sizes - Compact to Rack Mount

## Brief Features & Specifications

Intel® processor & Fan-Less Design (where applicable)  
 Moderate to Low Power Consumption  
 AC/24VDC Multi-Power with most models  
 Type Approved (IEC 60945, EU-RO-MR)  
 Wide Range of Hardware Configuration options  
 Wide variety of mounting options



### Supported Microsoft® OS (where applicable):

Windows® 10 IoT Enterprise 2019 LTSC / 2016 LTSB, Windows® 7 Pro/Ultimate,  
 Windows® Server 2008/R2/2012/R2 and variations of Linux.

Compact Fanless	CPU & Chipsets	RAM & Storage	Default Connectivity	Power Inputs & Consumption (typ/max)
HT B30K	Core™ i5-6300U,2.4/3.0GHz Core™ i7-6600U,2.6/3.4GHz Celeron™ 3955U,2.0GHz Intel® SoC Intel® HD Graphics 520/510	8GB, 16GB, 32GB m.2 (240->960GB)	DVI-I, DVI-D, DP1.2, GbLAN Ethernet, USB2.0, USB3.0, SDXC Slot	24VDC 39W / 50W
Dimensions	W:220.00 x H:89.00 x D:192.00 mm			
HT B30G	Core™ i5-6300U,2.4/3.0GHz Core™ i7-6600U,2.6/3.4GHz Celeron™ 3955U,2.0GHz Intel® SoC Intel® HD Graphics 520/510	8GB, 16GB, 32GB SSD / m.2 (240->960GB)	DVI-I, DVI-D, DP1.2, GbLAN Ethernet, USB2.0, USB3.0, SDXC Slot	100-240VAC + 24VDC 39W / 50W
Dimensions	W:220.00 x H:89.00 x D:300.00 mm			
enix-2087	Quad Core™ i7-4770TE/T Dual Core™ i5-4570TE/T Dual Core™ i3-4330TE Intel® Q87 Intel® HD Graphics 4600	8GB, 16GB, 32GB SSD 2.5" (240->1.92TB)	VGA, HDMI, DVI-D, DP, GbLAN Ethernet, USB 2.0, USB 3.0, COM, PCIe x16 (3.0), PCIe x4 and PCIe x1 (2.0) MiniPCIe (mSATA)	24VDC Approx. 55W /96W
Dimensions	W:380.00 x H:88.80 x D:351.00 mm			



Compact	CPU & Chipsets	RAM & Storage	Default Connectivity	Power Inputs & Consumption (typ/max)
HT C02H	Quad Core™ i5-4570S,2.9GHz Quad Core™ i7-4770S,3.1GHz Dual Core™ i3-4330,3.5GHz Intel® Q87 Intel® HD Graphics 4600	4GB, 8GB, 16GB SSD (240->960GB) HDD (1TB)	DVI-I, DVI-D, DP, GbLAN Ethernet, USB1.1, USB2.0, USB3.0, COM, PCI, PCIe x16/x4/x1	100-240VAC or 24VDC 70W / 330W or 220W
Dimensions	W:345.00 x H:133.00 x D:390.00 mm			



2U Rack Mount	CPU & Chipsets	RAM & Storage	Default Connectivity	Power Inputs & Consumption (typ/max)
HT 221	Quad Core™ i5-4570S,2.9GHz Quad Core™ i7-4770S,3.1GHz Dual Core™ i3-4330,3.5GHz Intel® Q87 Intel® HD Graphics 4600	4GB, 8GB, 16GB SSD (240->960GB) HDD (1TB)	DVI-I, DVI-D, DP, GbLAN Ethernet, USB1.1, USB2.0, USB3.0, COM, PCI, PCIe x16/x4/x1	100-240VAC 70W / 330W
Dimensions	W:430.00 x H:80.00 x D:460.80 mm			



4U Rack Mount	CPU & Chipsets	RAM & Storage	Default Connectivity	Power Inputs & Consumption (typ/max)
HT C02 + 4U Rack Adapter	See HT C02H and HT C02HI	4GB, 8GB, 16GB SSD (240->960GB) HDD (1TB)	DVI-I, DVI-D, DP, GbLAN Ethernet, USB1.1, USB2.0, USB3.0, COM, PCI, PCIe x16/x4/x1	100-240VAC or 24VDC 70W / 330W or 220W
Dimensions	W:482.00 x H:176.00 x D:450.00 mm			
enix-41X10	Xeon E5-2680 v4 Xeon E5-2640 v4 Xeon E5-2620 v4 Intel® C612 Onboard VGA optional AMD ER93FB	8GB, 16GB, 32GB, 64GB, 128GB SSD 2.5" (240GB->1.92TB)	VGA, PS/2, GbLAN Ethernet, USB 2.0, USB 3.0, Audio, PCIe x16 (3.0), PCIe x1 (2.0) (in x4)	100-240VAC Approx. 150W /230W
Dimensions	W:426.70 x H:177.00 x D:385.00 mm			



## Contact us or need more information?

Contact us at +47 4814 2200 or visit [www.hattelandtechnology.com/about/team](http://www.hattelandtechnology.com/about/team)  
 Visit our extensive Product Brochure Library at [www.hattelandtechnology.com/brochure-library](http://www.hattelandtechnology.com/brochure-library)