



Displays for all Maritime Markets

# SERIES X

Naval  
Yacht  
Commercial

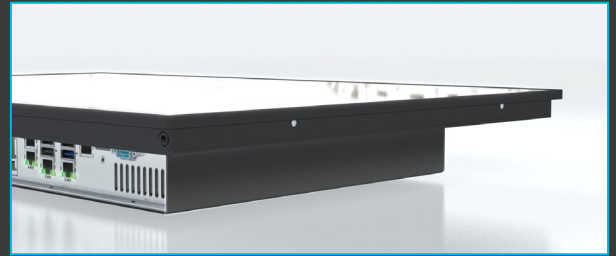
**HATTELAND  
TECHNOLOGY**  
an EMBRON Company 

# SERIES X Displays

## SLEEK-BY-DESIGN

Our commitment to develop specialized products for a multitude of onboard ship systems continues, with the SERIES X range of displays. With cast aluminum compact and sleek-by-design chassis, these units can be desk or console mounted - keeping our long-term commitment to Form, Fit and Function.

SERIES X displays are all fully type-approved, having undergone and passed our extensive test program, which includes HALT testing. This means that the products are tested well outside the requirements of EN60945 and E10. The result is a more reliable product.



GLASS DISPLAY CONTROL™

## KEY FEATURES - Series X Generation 2 (G2)

### Sizes:

15", 17", 19", 23.8", 24", 26", 27", 32", 43" and 55"

LED Backlight - Runs Cool and Efficiently

Daylight Viewable with Superior Optical Bonding

Sunlight Viewable / High-Bright Versions Available

Full Dimming - Adjustable Brightness from 0-100%

GLASS DISPLAY CONTROL™ Interface

AC/24VDC Multi-Power with most sizes

Waterproof Front / Resistant Back. (IP66 / IP22)

Type Approved (IEC 60945, ABS, BV, CCS, ClassNK, EU-RO-MR, KR)

ECDIS Compliant

Wide Range of Operating & Storage Temperature, Humidity

Multi-Touch Option



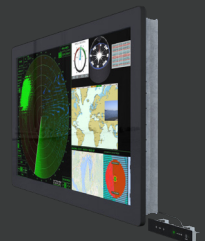
55" Chart / Tactical Table

55" Floor Tilt Model

Available as Display/Wall/Console models (where applicable)



32" Display



43" Display





# Additional Options



## HIGH-BRIGHT

SERIES X Displays are also available in High-Bright versions. These High-Bright Displays are enhanced to be clearly visible in direct-sunlight conditions, while maintaining the same form-factor as standard brightness displays.

This is ideal for installations that require matching displays on the pilothouse and the fly-bridge. High-Bright displays can also be combined with our Multi-Touch technology.

**High-Bright displays are available in the following sizes: 15", 17", 19" & 24".**



## MULTI-TOUCH

Multi-touch is defined as the ability to recognize two simultaneous touch points. Using projected capacitive technology lets us create a more intuitive form of human-device interaction. Touch-interface gestures, supported by projected capacitive sensors, can simplify the interface and provide an intuitive user experience that goes beyond the typical "button replacement" found in most simple touch interfaces.

Moving the active sensor area on the backside of the protection glass makes the system very durable and not sensitive to surface damages like dirt, scratches etc.



## PANEL COMPUTERS - Series X Generation 2 (G2)

All SERIES X display sizes are available with integrated state of the art PC technology (SERIES X Generation 2) suited for a range of processors including Intel® Quad Core i5-6500TE 2.3GHz/3.3GHz, Intel® Quad Core i7-7700T, 2.9/3.8GHz or Intel® Dual Core Celeron™ G3900TE, 2.3/2.3GHz. The SERIES X is designed and built for type approved maritime systems instantly transforming them into navigation and automation power-houses. SERIES X panel computers are a single flexible solution, designed only for the marine environment and built to last. Available as: 19, 24 and 27 inch.

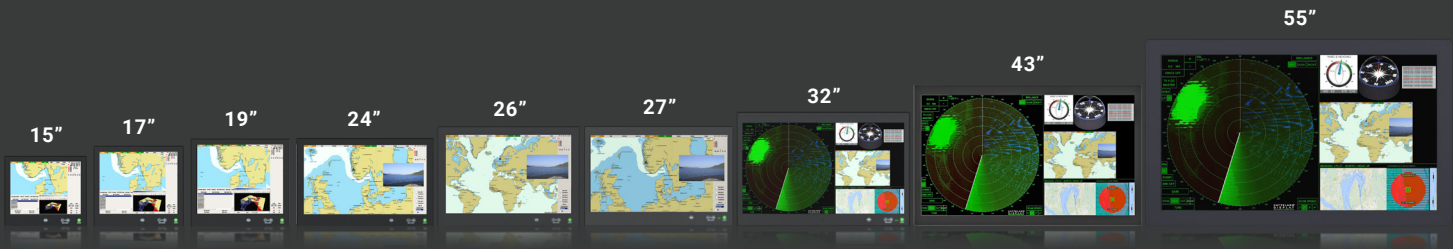


## REMOTE CONTROL

The remote controller enables the control of SERIES X (15, 17, 19, 23.8, 24, 26, 27, 32, 43 & 55 inch) Displays by providing instant keypad functionality over RS-485/422 serial bus through the well implemented SCOM Protocol by Hatteland Technology.



# Specifications



	Size & Active Area (HxV)	Resolution, Aspect & Response Time	Contrast Ratio, Light Intensity & View Angle	Signal & Composite Video Connectors	Power Inputs & Consumption (typ/max)	Dimensions (WxHxD) & Compass Safe Distance
<b>15" DISPLAY</b> HD 15T22 MMD <i>High Bright</i> (option)	15.0 inch 11.97" x 8.98"	1024 x 768 XGA [4:3] 35ms	1500:1, 400 cd/m <sup>2</sup> <i>1500:1, 1000 cd/m<sup>2</sup></i> 85° (L/R/U/D)	2 x DVI-I IN 1 x DisplayPort (DP1.2) IN 1 x VGA OUT 2 x Comp. Video (BNC) IN	100-240V AC (50/60Hz) + 24VDC 75W Max	14.02" x 12.09" x 2.81" <i>14.02" x 12.09" x 3.09"</i> Standard: 39.37" Steering: 25.59"
<b>17" DISPLAY</b> HD 17T22 MMD <i>High Bright</i> (option)	17.0 inch 13.30" x 10.64"	1280 x 1024 SXGA [5:4] 5ms <i>30ms</i>	1000:1, 350 cd/m <sup>2</sup> <i>800:1, 1000 cd/m<sup>2</sup></i> 85° (L/R/D), 60° (U)	2 x DVI-I IN 1 x DisplayPort (DP1.2) IN 1 x VGA OUT 2 x Comp. Video (BNC) IN	100-240V AC (50/60Hz) + 24VDC 75W Max <i>150W Max</i>	15.35" x 13.82" x 2.81" <i>15.35" x 13.82" x 3.09"</i> Standard: 49.21" / <i>39.37"</i> Steering: 33.46" / <i>27.56"</i>
<b>19" DISPLAY</b> HD 19T22 MMD <i>High Bright</i> (option)	19.0 inch 14.82" x 11.85"	1280 x 1024 SXGA [5:4] 35ms	1500:1, 350 cd/m <sup>2</sup> 85° (L/R/U/D) <i>2000:1, 1000 cd/m<sup>2</sup></i> 89° (L/R/U/D)	2 x DVI-I IN 1 x DisplayPort (DP1.2) IN 1 x VGA OUT 2 x Comp. Video (BNC) IN	100-240V AC (50/60Hz) + 24VDC 75W <i>156W Max</i>	16.89" x 15.04" x 2.81" <i>16.89" x 15.04" x 3.09"</i> Standard: 35.43" Steering: 17.72"
<b>24" DISPLAY</b> HD 24T22 MMD <i>High Bright</i> (option)	24.0 inch 20.92" x 11.77"	1920 x 1080 FHD [16:9] 25ms	3000:1, 300 cd/m <sup>2</sup> <i>2300:1, 1000 cd/m<sup>2</sup></i> 89° (L/R/U/D)	2 x DVI-I IN 1 x DisplayPort (DP1.2) IN 1 x VGA OUT 2 x Comp. Video (BNC) IN	100-240V AC (50/60Hz) + 24VDC 156W Max	23.35" x 15.12" x 2.76" <i>23.35" x 15.12" x 3.03"</i> Standard: 55.12" Steering: 33.46"
<b>26" DISPLAY</b> HD 26T22 MMD <i>Last Time Buy!</i>	25.54 inch 21.66" x 13.54"	1920 x 1200 WUXGA [16:10] 20ms	1500:1, 350 cd/m <sup>2</sup> 88° (L/R/U/D)	2 x DVI-I IN 1 x DisplayPort (DP1.2) IN 1 x VGA OUT 2 x Comp. Video (BNC) IN	100-240V AC (50/60Hz) + 24VDC 231W Max	24.45" x 17.13" x 3.62" Standard: 74.80" Steering: 43.31"
<b>27" DISPLAY</b> HD 27T22 MMD	27.0 inch 23.53" x 13.23"	1920 x 1080 FHD [16:9] 12ms	3000:1, 300 cd/m <sup>2</sup> 89° (L/R/U/D)	2 x DVI-I IN 1 x DisplayPort (DP1.2) IN 1 x VGA OUT 2 x Comp. Video (BNC) IN	100-240V AC (50/60Hz) + 24VDC 75W Max	25.59" x 17.20" x 2.74" Standard: 74.80" Steering: 43.31"
<b>32" DISPLAY</b> HD 32T22 MVD	32.0 inch 27.89" x 15.69"	3840 x 2160 UHD [16:9] 12ms (G to G)	1000:1, 350 cd/m <sup>2</sup> 89° (L/R/U/D)	2 x HDMI 1.4 IN 1 x HDMI 2.0 IN 1 x DisplayPort (DP1.2) IN	100-240V AC (50/60Hz) + 24VDC 65W / 156W	29.84" x 19.69" x 2.52" Standard: 94.49" Steering: 57.09"
<b>43" DISPLAY</b> HD 43T22 MVD	43.0 inch 37.05" x 20.84"	3840 x 2160 UHD [16:9] 8ms (G to G)	3000:1, 500 cd/m <sup>2</sup> 89° (L/R/U/D)	2 x HDMI 1.4 IN 1 x HDMI 2.0 IN 1 x DisplayPort (DP1.2) IN	100-240V AC (50/60Hz) + 24VDC 312W MAX	39.57" x 24.41" x 2.97" Standard: 61.02" Steering: 47.24"
<b>55" DISPLAY</b> HD 55T22 MVD Wall / <i>Console</i>	55.0 inch 47.62" x 26.79"	3840 x 2160 UHD [16:9] 6.5ms (G to G)	4000:1, 450 cd/m <sup>2</sup> 89° (L/R/U/D)	2 x HDMI 1.4 IN 1 x HDMI 2.0 IN 1 x DisplayPort (DP1.2) IN	100-240V AC (50/60Hz) + 24VDC 145W / 312W	53.35" x 32.48" x 4.88" <i>53.02" x 32.19" x 3.90"</i> Standard: 196.85" Steering: 90.55"

Response Time, Contrast Ratio, Light Intensity and View Angle indicated as (typ) typical values. Datasheet, Technical Drawings and User Manuals available on [www.hattelandtechnology.com](http://www.hattelandtechnology.com).  
*High Bright (HB)* and non-High Bright models available as indicated.

## Head Office:

Hatteland Technology AS, Eikeskogvegen 52, N-5570 Aksdal, Norway. Tel: +47 4814 2200 / [mail@hattelandtechnology.com](mailto:mail@hattelandtechnology.com)

## Hatteland Technology INC.

450 South Melrose Drive, Suite #107, Vista, CA 92081, USA. Tel: 858-282-0659 / [donna@hattelandtechnology.com](mailto:donna@hattelandtechnology.com)

## Sales Offices:

Hatteland Technology AS, Strandveien 35, N-1366 Lysaker, Norway. Tel: +47 4814 2200 - [sales@hattelandtechnology.com](mailto:sales@hattelandtechnology.com)

Hatteland Technology SAS, Actimart- 1140, rue Ampère, CS 80544, 13594 Aix-en-Provence, Cedex 3, France. Tel: +33 (0) 6 88 33 64 93 / [mehdi.bounoua@hattelandtechnology.com](mailto:mehdi.bounoua@hattelandtechnology.com)