

NEW

New cost effective Panel Computers

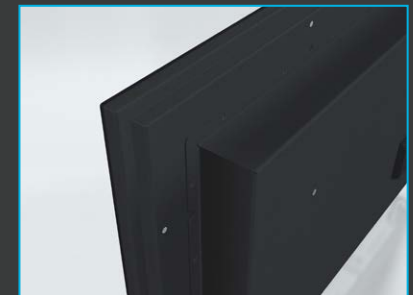
SERIES E

Maritime Multi Computers (MMC)

Intel® Apollo Lake processor, Fan-Less Design,
LED Backlight Technology, Full Dimming 100%,
Low Power Consumption, Multi-Power Option,
Superior Optical Bonding Option, Multi-
Touch Option, EN60945 Tested*,
Type Approved EU-RO-MR*,
ECDIS Compliant

* = pending

Series E delivers a reliable all-in-one solution for diverse maritime applications and enables tangible cost savings for maritime technology and equipment manufacturers as well as systems integrators.



SPECIFICATIONS

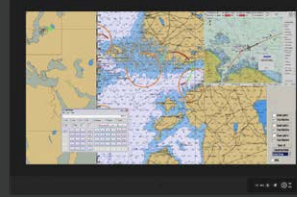
DISPLAY TECHNOLOGY & MECHANICAL



15.6"



21.5"



24.0"



27.0"

	Response Time & View Angle (typ)	Contrast Ratio (typ) & Light Intensity (typ)	Pixel Pitch (mm)	Active Area (mm [inch])	Power Consumption (typ/max)	Dimensions (WxHxD) (mm) [inch] & Compass Safe Distance (cm) [inch]	Approx. Weight
15.6" HD 16T30 MMC	35ms (tr+tf) 85° (u/d/l/r)	1500:1 400 cd/m²	0.17925 (H) 0.17925 (V)	344.16 [13.55"] (H) 193.59 [7.62"] (V)	44W / 57W	397.60 [15.65"] x 279.50 [11.00"] x 94.50 [3.72"] Standard: 60 [23.62"] - Steering: 30 [13.78"]	4.3kg 9.48lbs
21.5" HD 21T30 MMC	25ms (tr+tf) 89° (u/d/l/r)	3000:1 250 cd/m²	0.24795 (H) 0.24795 (V)	476.064 [18.74"] (H) 267.786 [10.52"] (V)	44W / 53W	536.00 [21.10"] x 358.50 [14.11"] x 88.50 [3.46"] Standard: 70 [27.56"] - Steering: 60 [23.62"]	7kg 15.43lbs
24.0" HD 24T30 MMC	14ms (G/G) 89° (u/d/l/r)	1000:1 250 cd/m²	0.274.5 (H) 0.274.5 (V)	527.04 [20.75"] (H) 296.46 [11.67"] (V)	45W / 61W	593.00 [23.35"] x 384.00 [15.12"] x 88.50 [3.48"] Standard: 80 [31.50"] - Steering: 60 [23.62"]	8.5kg 18.74lbs
27.0" HD 27T30 MMC	12ms (on/off) 89° (u/d/l/r)	3000:1 300 cd/m²	0.31125 (H) 0.31125 (V)	597.6 [23.53"] (H) 336.15 [13.23"] (V)	43W / 60W	650.00 [25.59"] x 437.00 [17.20"] x 88.50 [3.48"] Standard: 80 [31.50"] - Steering: 60 [23.62"]	10.7kg 23.59lbs

For all sizes: Native Resolution & Aspect Ratio: 1920 x 1080 (FHD) - 16:9
 Max Colors: 16.77M colors (RGB 8-bit)
 Operating / Storage Temperature / Humidity / IP Rating: -15°C to +55°C / -20°C to +60°C / Humidity up to 95% / IP66 front - IP20 rear (EN60529)
 User Controls: Power On/Off, Brightness Control (-/+), Power LED, ECDIS LED, Buzzer, Light Sensor

Signal & I/O Ports	Power Input & Options	Touch Screen Option	Bonded Glass Option	Audio Option
2 x DisplayPort (DP) 2 x USB2.0 (Type A) 2 x GbLAN (RJ45) 1 x RS-232/422/485 (DB9M) AC: 1 x Std. IEC Inlet if DC: 1 x 2-pin T.Block 5.08	Multi-Power: 100-240V AC - 50/60Hz + 24VDC or Single 100-240V AC - 50/60Hz	Projected Capacitive Touch Screen (Multitouch ,USB, Pen, Glove support)	Optical Bonding Technology	2W Amplified Audio out (DB9F, HT 00235 OPT-A1)

Other Factory Options

TPM2.0 (Trusted Platform Module), 1 x Diskbay with support for 2 x 2.5" or One HD USB module installed as:
 1 x PCA100309-1: Dual Isolated RS-232, connector 2xDB9 or 1 x ZIA0001310-B: CAN isolated 2 channel or 2 x 4 channel or
 1 x PCA100297-1: Isolated Digital IO module, 4 x OUT/4 x IN or 1 x PCA100298-1: LAN 10/100Mbps, 2 ports RJ45

Available Accessories

Console Mount Kit, Table Mount Bracket and more available. Please review datasheet for complete list.



COMPUTER TECHNOLOGY

Supported Operating Systems (OS)	Default Processor / CPU	Default Memory / RAM Installed	Default Storage Device Installed	System / Graphics Chipsets
Windows® 10 IoT Enterprise 2016 LTSB (64bit) (Product Distribution End Date November 2025)	Intel® Atom® x7-E3950, 2M Cache, up to 2.00GHz	2GB DDR3L, SO-DIMM, 1600MHz, Single Channel	32GB eMMC	Intel® SOC Intel® HD Graphics 505
Ethernet GbLAN	BIOS / BUZZER	Speaker / WatchDog Timer	Other Features	
1 x Realtek Gigabit LAN 10/100/1000Mbps 1 x Intel Gigabit LAN 10/100/1000Mbps	AMI BIOS, supports ACPI Yes (according to EN60945)	None Yes (256 segments, 0, 1, 2...255 sec/min)	RTC (0.5s/day*), Battery Alarm, WakeOnLan, Fast Boot, AT mode, USB Boot, TPM2.0 (option)	
Available Memory / RAM Configurations	Available Storage Device Configurations	Available OS Configurations		
2GB, 4GB, 8GB	240GB m.2 (internal addition)	Linux: Please contact us.		