

NEW

HATTELAND® SeaHawk Security & Surveillance

IP CAMERAS

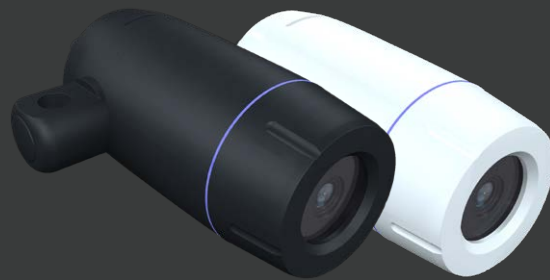
Sophisticated Solutions

1/2.8" Progressive Scan CMOS, Fixed lens*,
Auto DC Iris, Varifocal lens, IR cut filter,
H265 / H264 / MJPEG, Max 30fps @
1920 x 1080, Streaming Enabled,
Ethernet 10/100base-T (RJ-45),
Multi-lingual OSD, ONVIF, PSIA,
MPEG-TS, Wisenet Wave &
Milestone API, Ceiling &
Wall Brackets*

* = selected models only

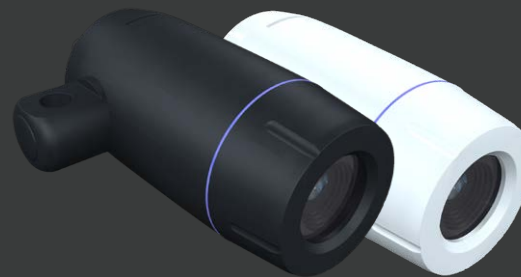
HATTELAND® **SEAHAWK**

The new HATTELAND® SeaHawk range of network enabled Security & Surveillance Cameras suitable for Security applications (person / area) and Industrial applications (process monitoring).



HT FBVF

Bullet Varifocal



HT ZB2X

ZoomBullet



HT FDFL

FixedDome

SPECIFICATIONS



WALL/CEILING (MULTI) BRACKET

CEILING BRACKET

WALL BRACKET

CAMERA TECHNOLOGY

	Image Sensor	Lens Type	Zoom	Focal length	Maximum Aperture ratio	Angle of view	Electronic shutter speed	Flip mode	Image enhancement
HT FBVF	1/2.8" Progressive Scan CMOS	Auto DC Iris, Varifocal lens, IR cut filter	2.5X (non-motorized zoom)	f=2.8 ~ 12mm	F1.4	Wide: H: 103°, V: 74.4° Tele: H: 30.8°, V: 23.3°	1 ~ 1/30 sec (B/W) 1/25 ~ 1/1000 sec (color)	Horizontal Vertical	AF, AWB, AE, NR, TDN, DSS, BLC, GAMMA, DPC, DEFOG, WDR
HT ZB2X	1/2.8" Progressive Scan CMOS	Auto DC Iris, Zoom, IR cut filter	20 x (optical, motorized)	f=4.8 ~ 57.6mm	F2.2 (wide) ~ 2.3 (tele)	Wide: H: 64.2°, V: 37.5° Tele: H: 5.9°, V: 3.3°	1 ~ 1/30 sec (B/W) 1/25 ~ 1/1000 sec (color)	Horizontal Vertical	AGC, AWB, AE, TDN, DSS, BLC, WDR
HT FDFL	1/2.8" Progressive Scan CMOS	Fixed lens, IR cut filter	N/A	2.8mm	F1.8	H: 105°, V: 87°	1/1 ~ 1/10000 sec	Horizontal Vertical	AF, AWB, AE, NR, TDN, DSS, BLC, GAMMA, DPC, DEFOG, WDR, IR LED (10pcs)

VIDEO TECHNOLOGY

	Compression	Frame rate	Bitrate	Resolutions	Streaming	Burn-in OSD
HT FBVF	H265 / H264 / MJPEG	Max 30fps @ 1920 x 1080	Primary: 32Kbps ~ 16Mbps, Secondary: 32Kbps ~ 4Mbps	352 x 240 ~ 1920 x 1080	Primary: H265 / H264, Secondary: H265 / H264 / MJPEG	Multi-lingual
HT ZB2X	H265 / H264 / MJPEG	Max 30fps @ 1920 x 1080	Primary: 32Kbps ~ 16Mbps, Secondary: 32Kbps ~ 4Mbps	352 x 240 ~ 1920 x 1080	Primary: H265 / H264, Secondary: H265 / H264 / MJPEG	Multi-lingual
HT FDFL	H265 / H264 / MJPEG	Max 30fps @ 1920 x 1080	Primary: 32Kbps ~ 16Mbps, Secondary: 32Kbps ~ 4Mbps	352 x 240 ~ 1920 x 1080	Primary: H265 / H264, Secondary: H265 / H264 / MJPEG	Multi-lingual

NETWORK TECHNOLOGY

	Interface	Protocol	Security	API
HT FBVF	1 x Ethernet 10/100base-T (RJ-45)	IPv4/v6, TCP, UDP, IGMP (MULTICAST), ICMP, DHCP, HTTP, HTTPS, RTP, RTSP, FTP, SNMP, UPnP, WS-Discovery, Zero-configuration, NTP, DDNS	Password protection, IP address filtering, HTTPS encryption	ONVIF, PSIA, MPEG-TS
HT ZB2X	1 x Ethernet 10/100base-T (RJ-45)	IPv4/v6, TCP, UDP, IGMP (MULTICAST), ICMP, DHCP, HTTP, HTTPS, RTP, RTSP, FTP, SNMP, UPnP, WS-Discovery, Zero-configuration, NTP, DDNS	Password protection, IP address filtering, HTTPS encryption	ONVIF, PSIA, MPEG-TS
HT FDFL	1 x Ethernet 10/100base-T (RJ-45)	IPv4/v6, TCP, UDP, IGMP (MULTICAST), ICMP, DHCP, HTTP, HTTPS, RTP, RTSP, FTP, SNMP, UPnP, WS-Discovery, Zero-configuration, NTP, DDNS	Password protection, IP address filtering, HTTPS encryption	ONVIF, PSIA, MPEG-TS

EVENT & GENERAL

	Event sources	Event Actions	Housing	Certification	Power Supply	Power Consum.	Operating Temp.
HT FBVF	Motion, Sensor Input, Client disconnection	Notification (E-mail), FTP, Alarm control, Recording	POM (Polyoksymetylen), RAL 5012 (ring)	Designed to meet IEC60945, IP66/IP67	PoE: 802.3af	12W (max)	-40°C to +65°C
HT ZB2X	Motion, Sensor Input, Client disconnection	Notification (E-mail), FTP, Alarm control, Recording	POM (Polyoksymetylen), RAL 5012 (ring)	Designed to meet IEC60945, IP66/IP67	PoE: 802.3af	12W (max)	-40°C to +65°C
HT FDFL	Motion, Sensor Input, Client disconnection	Notification (E-mail), FTP, Alarm control, Recording	POM (Polyoksymetylen), RAL 5012 (ring)	Designed to meet IEC60945, IP66/IP67	PoE: 802.3af	6W (max)	-40°C to +65°C

ACCESSORIES

	Description
HT WB11-AA	SeaHawk Bullet Wall Bracket ALU. Black RAL9005 (for -X1 models only)
HT CB11-AA	SeaHawk Bullet Ceiling Bracket ALU. Black RAL9005 (for -X1 models only)
LD-001	IP67 coupler for patch cable, 2 x RJ45 female-to-female

DIMENSIONS & WEIGHT

	Dimensions	Weight
HT FBVF	W:153.00 [6.02"] x H:105.00 [4.13"] x D:201.00 [7.91"] mm [inch]	1.9 Kg / 4.19 lbs
HT ZB2X	W:153.00 [6.02"] x H:105.00 [4.13"] x D:201.00 [7.91"] mm [inch]	2.0 Kg / 4.4 lbs
HT FDFL	W:153.00 [6.02"] x H:105.00 [4.13"] x D:201.00 [7.91"] mm [inch]	1.15kg / 2.5lbs

AVAILABLE MODELS

HT FBVF (Bullet Varifocal)		HT ZB2X (ZoomBullet)		HT FDFL (FixedDome)	
HT FBVF AA-X1	SeaHawk FixedBullet Varifocal POM Black	HT ZB2X AA-X1	SeaHawk ZoomBullet 20x POM Black	HT FDFL AA-X3	SeaHawk FixedDome POM Black, Rear Cable Gland Output
HT FBVF WA-X1	SeaHawk FixedBullet Varifocal ALU. White RAL9010	HT ZB2X AA-X1	SeaHawk ZoomBullet 20x ALU. White RAL9010	HT FDFL AB-X3	SeaHawk FixedDome POM Black, Bottom Cable Gland Output
				HT FDFL WA-X3	SeaHawk FixedDome ALU. White RAL9010, Rear Cable Gland Output
				HT FDFL WB-X3	SeaHawk FixedDome ALU. White RAL9010, Bottom Cable Gland Output