

NEW

HATTELAND®
MONITORS

Single Cable Monitors, Series E

USB-C PD/DP Display, LED Backlight Technology,
Full Dimming 100%, Low Power Consumption,
Daisy Chain (MST) Capability, Multi-Power
Option, Superior Optical Bonding Option,
Multi-Touch Option, EN60945 Tested*,
Type Approved EU-RO-MR*

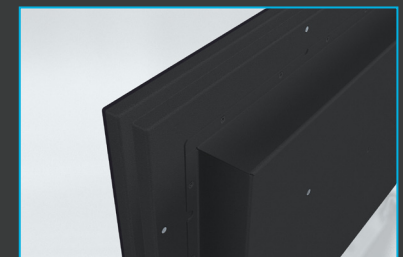
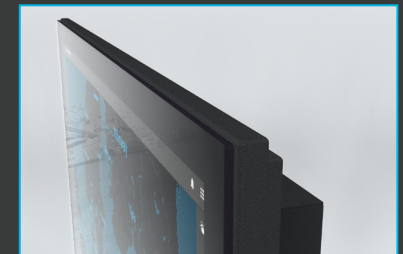
* = pending

See more. Hide less.

The **Series E Single Cable Monitors** provide stellar visualizations of your data - all through a single USB-C cable.

Fewer components and cables enable a sleek design and makes installation a breeze. At the same time, the Series E offers the performance and versatility you should expect from a cutting-edge maritime monitor.

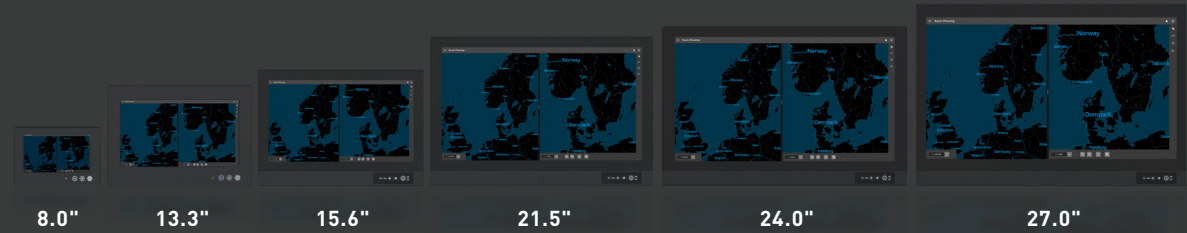
Ready to rethink your console?



NEW

SPECIFICATIONS

MONITOR TECHNOLOGY & MECHANICAL



	Response Time & View Angle (typ)	Contrast Ratio (typ) & Light Intensity (typ)	Pixel Pitch (mm)	Active Area (mm [inch])	Power Consumption (typ/max)	Dimensions (WxHxD) (mm) [inch] & Compass Safe Distance (cm) [inch]	Approx. Weight
8.0" HD 08T30 SCM	20ms (tr+tf) 85° (u/d/l/r)	1000:1 750 cd/m ²	0.138 (H) 0.138 (V)	176.64 [6.88"] (H) 99.36 [3.91"] (V)	14W / 22W	228.80 [9.01"] x 156.60 [6.17"] x 73.80 [2.91"] Standard: 65.00 [25.59"] - Steering: 25.00 [9.84"]	1.1kg 2.4lbs
13.3" HD 13T30 SCM	25ms (tr+tf) 85° (u/d/l/r)	600:1 600 cd/m ²	0.1529 (H) 0.1529 (V)	293.76 [11.57"] (H) 165.24 [6.51"] (V)	14W / 22W	355.00 [13.98"] x 248.50 [9.78"] x 69.00 [2.72"] Standard: 10.00 [3.94"] - Steering: 5.00 [1.97"]	2.3kg 5.1lbs
15.6" HD 16T30 SCM	35ms (tr+tf) 85° (u/d/l/r)	1500:1 400 cd/m ²	0.17925 (H) 0.17925 (V)	344.16 [13.55"] (H) 193.59 [7.62"] (V)	18W / 30W	397.60 [15.65"] x 279.50 [11.00"] x 94.50 [3.72"] Standard: 60 [23.62"] - Steering: 35 [13.78"]	4.3kg 9.48lbs
21.5" HD 21T30 SCM	25ms (tr+tf) 89° (u/d/l/r)	3000:1 250 cd/m ²	0.24795 (H) 0.24795 (V)	476.064 [18.74"] (H) 267.786 [10.52"] (V)	26W / 38W	536.00 [21.10"] x 358.50 [14.11"] x 88.50 [3.46"] Standard: 70 [27.56"] - Steering: 60 [23.62"]	7kg 15.43lbs
24.0" HD 24T30 SCM	14ms (G/G) 89° (u/d/l/r)	1000:1 250 cd/m ²	0.274.5 (H) 0.274.5 (V)	527.04 [20.75"] (H) 296.46 [11.67"] (V)	29W / 40W	593.00 [23.35"] x 384.00 [15.12"] x 88.50 [3.48"] Standard: 80 [31.50"] - Steering: 60 [23.62"]	8.5kg 18.74lbs
27.0" HD 27T30 SCM	12ms (on/off) 89° (u/d/l/r)	3000:1 300 cd/m ²	0.31125 (H) 0.31125 (V)	597.6 [23.53"] (H) 336.15 [13.23"] (V)	AC+DC: 43W / 156W AC: 43W / 125W	650.00 [25.59"] x 437.00 [17.20"] x 88.50 [3.48"] Standard: 80 [31.50"] - Steering: 60 [23.62"]	10.7kg 23.59lbs
For all sizes:	Native Resolution & Aspect Ratio: 1920 x 1080 (FHD) - 16:9. Note: 8.0" = Max 1280 x 720 (HD). Max Colors: 16.77M colors (RGB 8-bit) Operating / Storage Temperature / Humidity: -15°C to +55°C / -20°C to +60°C / Humidity up to 95% IP Rating: / IP66 front - IP20 rear (EN60529), IP22 (option). User Controls: Power On/Off, Brightness Control (-/+), Power LED, ECDIS LED, Buzzer, Light Sensor						



Signal & I/O Ports	Power Input & Options	Touch Screen Option	Bonded Glass Option
1 x USB-C Input (DP/PD): With DisplayPort (DP) & power input support 1 x USB-C Output (PD): For daisy chaining of monitor (up to 4 monitors) 1 x USB2.0 Type A	USB-C PD: 1 x USB-C PD Sink: 5-20V DC (Requires 60W) or Multi-Power: 1 x IEC 100-240V AC - 50/60Hz + 24VDC or Single Power: 1 x 100-240V AC - 50/60Hz	Projected Capacitive Touch Screen (Multitouch, USB, Pen, Glove support) Color Calibrated models (ECDIS)	Optical Bonding Technology
Available Accessories			
Console Mount Kit, Table Mount Bracket, VESA Adapters, DP+USB to USB-C, HDMI+USB to USB-C and VGA+USB to USB-C adapters			

USB-C & USB Functionality

- USB-C monitor with PD/DP capability for the first monitor in the chain, i.e. ONE CABLE solution.
- Daisy chain capability, with support for up to 4 monitor (actual number limited by connected computer hardware and Operating System).
- Support Touch for all connected monitors. No additional cable required for the touch, as touch signal goes via USB-C interface.
- Additional USB interface at each monitors, enable use of / connection of accessories such as HT USB External devices, keyboards, mouses, trackballs without additional connections to the connected computer.

