

NEW

Next Generation cost effective Panel Computers

# SERIES E

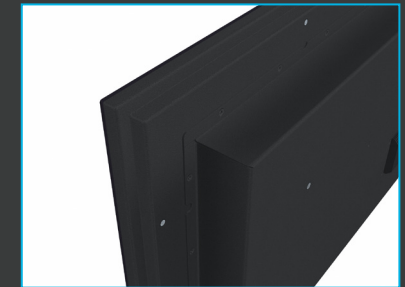
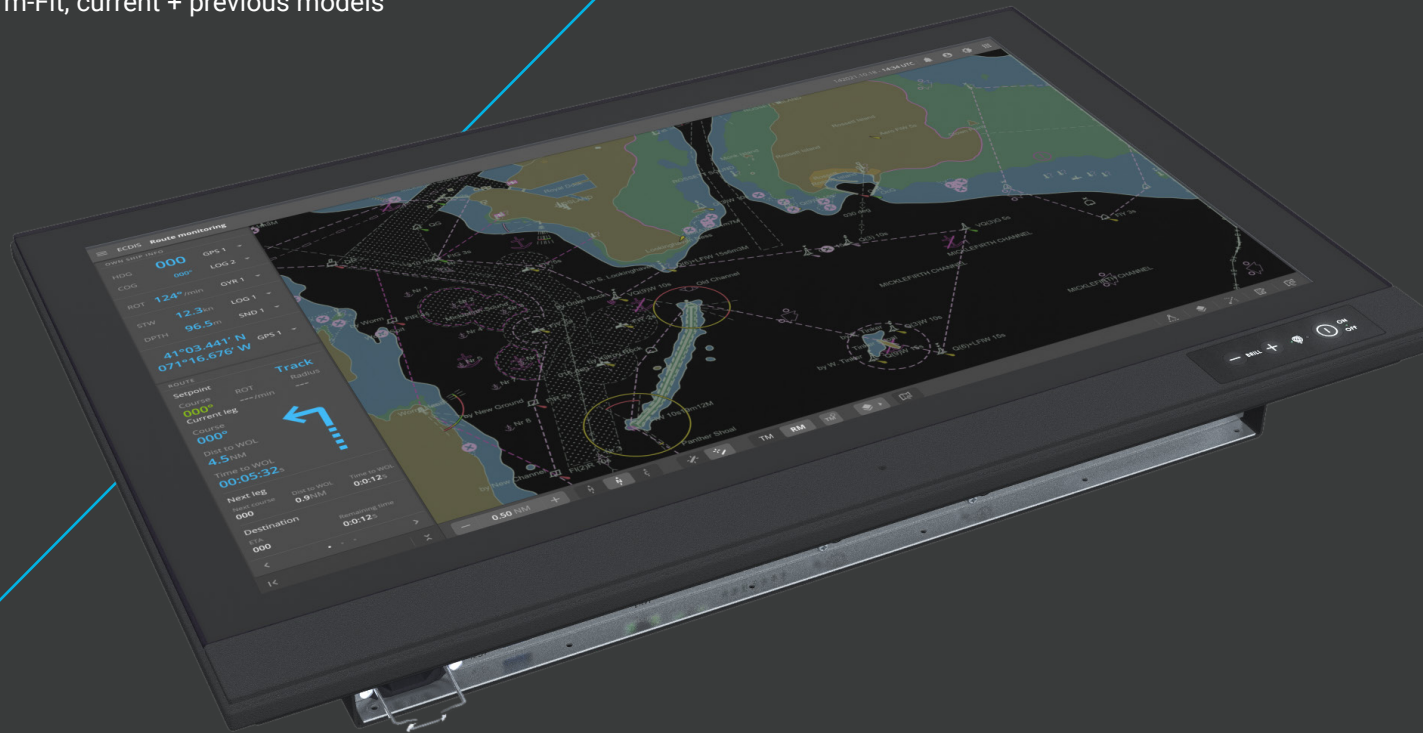
Maritime Multi Computers (MMC)

Upgraded performance  
Intel® 11th gen chipset  
27" / 23.8" / 21.5" / 15.6"  
Form-Fit, current + previous models

Levelled up across the (mother)board.

Stay ahead of processing requirements with the new SERIES E panel computers - a serious improvement from its celebrated predecessor. It packs upgraded connectors, CPU, RAM, and more, renewing its fitness for its ever-appealing purpose: **Your all-in-one solution for diverse maritime applications.**

Featuring tactile controls, the SERIES E combines navigation, automation, and a range of other shipboard applications via one interface, look no further.



# SPECIFICATIONS



## DISPLAY TECHNOLOGY & MECHANICAL

	Response Time & View Angle	Contrast Ratio & Light Intensity	Pixel Pitch (mm)	Resolution & Aspect Ratio	Active Area (mm [inch])	Power Consumption (typ/max)	Dimensions (WxHxD) (mm) [inch] & Compass Safe Distance (cm) [inch]
15.6" HD 16T36 MMC	35ms (tr+tf) 85° (u/d/l/r)	1500:1 400 cd/m <sup>2</sup>	0.17925 (H) 0.17925 (V)	1920 x 1080 16:9 (FHD)	344.16 [13.55"] (H) 193.59 [7.62"] (V)	AC+DC: 44W / 75W AC: 44W / 125W	397.60 [15.65"] x 279.50 [11.00"] x 93.26 [3.67"] Standard: 60 [23.62"] - Steering: 35 [13.78"]
21.5" HD 21T36 MMC	25ms (tr+tf) 89° (u/d/l/r)	3000:1 250 cd/m <sup>2</sup>	0.24795 (H) 0.24795 (V)	1920 x 1080 16:9 (FHD)	476.064 [18.74"] (H) 267.786 [10.52"] (V)	AC+DC: 44W / 156W AC: 44W / 125W	536.00 [21.10"] x 358.50 [14.11"] x 87.26 [3.44"] Standard: 70 [27.56"] - Steering: 60 [23.62"]
23.8" HD 24T36 MMC	14ms (G/G) 89° (u/d/l/r)	1000:1 250 cd/m <sup>2</sup>	0.274.5 (H) 0.274.5 (V)	1920 x 1080 16:9 (FHD)	527.04 [20.75"] (H) 296.46 [11.67"] (V)	AC+DC: 45.2W/156W AC: 45.2W / 125W	593.00 [23.35"] x 384.00 [15.12"] x 87.26 [3.44"] Standard: 80 [31.50"] - Steering: 60 [23.62"]
27.0" HD 27T36 MMC	12ms (on/off) 89° (u/d/l/r)	3000:1 300 cd/m <sup>2</sup>	0.31125 (H) 0.31125 (V)	1920 x 1080 16:9 (FHD)	597.6 [23.53"] (H) 336.15 [13.23"] (V)	AC+DC: 43.2W/156W AC: 43.2W / 125W	650.00 [25.59"] x 437.00 [17.20"] x 87.26 [3.44"] Standard: 80 [31.50"] - Steering: 60 [23.62"]
For all sizes:	Max Colors: 16.77M colors (RGB 8-bit) Operating / Storage Temperature / Humidity: -15°C to +55°C / -20°C to +60°C / Humidity up to 95%. IP Rating: IP66 front - IP20 rear (EN60529) - IP22=option Tactile User Controls: Power On/Off, Brightness Control (-/+), Power LED, ECDIS LED, Buzzer (75-85dB), Light Sensor						



Signal & I/O Ports	Power Input & Options	Touch Screen Option	Bonded Glass Option
3 x GbLAN (RJ45), 1 x USB-C DP ALT mode, PD/DP (60W), 4 x USB2.0 (Type A), 2 x USB3.0 (Type A), 2 x DisplayPort (DP++) OUT, 1 x DB9 Female - Amplified Audio 2W@70°C, AC: 1 x Std. IEC Inlet, DC: 1 x 2-pin T.Block 5.08	Multi-Power: 100-240V AC - 50/60Hz + 24VDC or Single 100-240V AC - 50/60Hz	Projected Capacitive Touch Screen (Multitouch, Pen, Glove support)	Optical Bonding Technology

Other Factory Options
Variations of SSD Storage, RAM Memory, Operating System, CPU, 1 x Diskbay with support for 2 x 2.5" or 1 or 3 (model dependent) HD USB module installed as: PCA200828-1: 4xCOM RS-422/485 isolated NMEA 4 channel module, PCA100309-1: Dual Isolated RS-232, connector 2xDB9M module, HTA2020002-AD1033: CAN isolated 2 channel module, HTA2020002-SLCAN: CAN isolated, 2 channel, socketCAN module, PCBAA21001: LAN 1Gbps, 2 x SFP module, PCA100297-1: Isolated Digital IO module - 4 x OUT/4 x IN, VSD203593-1: 2 x 3.5mm jack mic in, line out, • VSD203592-1: 1 x Isolated RS-232, DB9M connector, PCA200827-1: 2 x RJ-45, PoE 12V 5.5A receiver module, HT EPB STD-A2: External/Remote ON/OFF power button. Frame Grabber options (1 x supported via M.2 (PCIe x1) slot) as HD550N1 SDI M2: 1 x SDI IN, 1920x1080@60/50fps, HD550N1 HDV M2: 1 x HDMI IN+1 x VGA IN, 1920x1200p@60/50fps.

Available Accessories
Console Mount Kit, Table Mount Bracket, VESA Adapter, USB External Modules and more available. Please review datasheet for complete list.



## COMPUTER TECHNOLOGY

Supported Operating Systems (OS)	Processor / CPU Factory Options - Intel®
Windows® 10 IoT Enterprise 2019 LTSC (64bit) Windows® 10 IoT Enterprise 2021 LTSC (64bit) Linux	i7-1185G7E 1.8GHz/4.4GHz 4/8, 12MB, 15W or i5-1145G7E 1.5GHz/4.1GHz 4/8, 8MB, 15W or i3-1115G7E 2.2GHz/3.9GHz 2/4, 6MB, 15W or Celeron 6305E 1.8GHz 2/2, 4MB, 15W or On request (may be subject for MOQ: Intel® i3-1115G4E 2.2GHz/3.9GHz 2/4, 6MB, 15W
Graphics Chipset - Intel® (CPU dependent, see table above)	
Intel® Iris® Xe Graphics 1.35Ghz, 96 exe units (for Intel® i7-1185G7E), Intel® Iris® Xe Graphics 1.30Ghz, 80 exe units (for Intel® i5-1145G7E), Intel® UHD Graphics for 11th Gen Intel® Processors 1.25Ghz, 48 exe units (for i3-1115G4E), Intel® UHD Graphics 1.25Ghz, 48 exe units (for Intel® Celeron 6305E)	

Ethernet GbLAN - 10/100/1000Mbps	BIOS / BUZZER	Speaker / WatchDog Timer	Other Features
2 x Intel® I225IT Gigabit LAN, Teaming 1 x Realtek RTL8119I Gigabit LAN	EFI, ACPI Support Yes (according to EN60945)	None Yes (256 segments, 0, 1, 2...255 sec/min)	LAN wakeup, TPM 2.0, True power on after power fail, possible to use without battery, FAN speed regulation, Secure boot support as default

Other Chipsets	Available RAM Configurations	Available Storage Device Configurations	Power Manager
System: Intel® SOC (System) Audio: Realtek HD AUDIO ALC888 (on-board)	8GB > 64GB DDR4-3200, Dual Channel	#1: 1 x SSD SATA Type m.2 internal, 240GB > 480GB (Enterprise 24/7) #2: 2 x 2.5" SSD SATA via Removable Tray, 240GB > 3.84TB	AT, ACPI (S3/S4)

