

## DATA SHEET

Manufactured for: Hatteland Technology AS  
Product: 32.0 inch Industrial Monitor  
Type: ED 32T01 UHD-xxx-xx

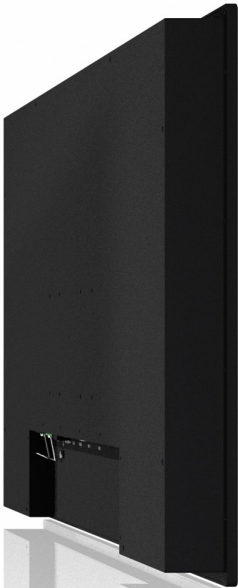
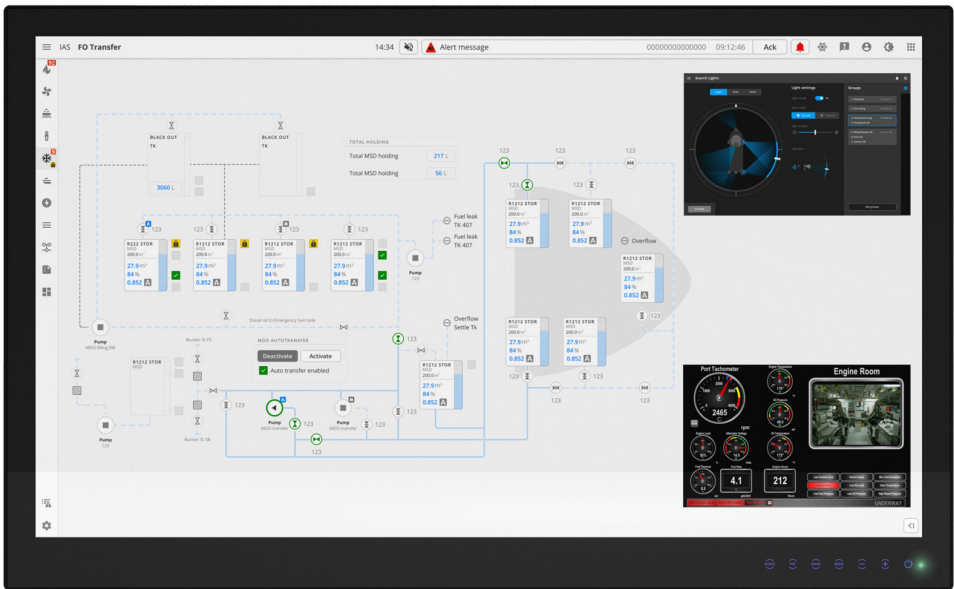
**i** Dimensions might be shown with or without decimals and indicated as mm [inches]. Tolerance on drawings is +/- 1mm. For accurate measurements, check relevant DWG file.

# ENIX<sup>PRO</sup>

## 32.0" ENIX Pro Monitor - Series ED

The ENIX Pro line - Series ED range of products provides SXGA to 4K resolution monitors to a wide range of industrial applications: HMI, safety systems, navigation, CCTV, voyage planning, sonar, tactical command & control platforms, and more. Its cutting-edge, high-definition LED monitor technology enables the presentation of large amounts of data onto one screen, instead of multiple monitors.

The 32.0" is available with Projected Capacitive Touch and Anti Glare coating for better functionality in all situations and conditions. It also features an On Screen Monitor menu and Keypad for ease of use.



High Resolution



Wide screen



High Contrast



Backlit LED



Touch keypad

# TECHNICAL SPECIFICATIONS

## 32.0 INCH ENIX PRO MONITOR - SERIES ED ED 32T01 UHD-xxx-xx

### TFT Technology

- High Quality TFT with LED Backlight Technology
- 32.0 inch viewable image size, Widescreen, Aspect Ratio 16:9
- TFT active-matrix liquid crystal panel, RGB vertical stripe
- AHVA LCD Technology

### TFT Characteristics

Native Resolution	3840 x 2160 (UHD, 4K)
Pixel Pitch (RGB)	0.1845 (H) x 0.1845 (V) mm
Response Time	12 ms (typ. G to G)
Contrast Ratio	1000:1 (typical)
Light Intensity	350 cd/m <sup>2</sup> (typical)
Viewable Angle	+/- 89 deg. (typical) (Up/Down/Left/Right)
Active Display Area	711.50 (H) x 401.50 (V) mm
Max Colors	1.07B color (8 bits +HI FRC)

### Supported Signals (Resolution)

UHD	3840 x 2160@60Hz
QHD	2560 x 1440@60Hz
WUXGA	1920 x 1600@60Hz
FHD	1920 x 1080@60Hz
UXGA	1600 x 1200@60Hz
SXGA	1280 x 1024@75/60Hz
XGA	1024 x 768@75/70/60Hz
SVGA (VESA Analog)	800 x 600@75/72/60/56Hz
VGA(VESA)	640 x 480@75/72/60Hz

**Note:**  
Actual supported signals may differ based on utilized graphics card.

### Features

- Dimmable function to 0 cd/m<sup>2</sup>
- Remote control, RJ-45, external wheel key encoder tool
- Remote control, RS-232, serial command
- Touch keypad
- Panel mount clips

### Power Specifications

Multi-power ACDC	100-240V AC - 50/60Hz + 24 VDC
Power Consumption	
ED 32T01 UHD-MA7-SA	: 51W (Typ) - 60W (Max)
ED 32T01 UHD-MA7-SP	: 53W (Typ) - 60W (Max)

### Physical Considerations

Measurements	W: 761.00 mm [29.96 inch] H: 469.00 mm [18.46 inch] D: 65.50 mm [2.58 inch]
Approx Weight:	
ED 32T01 UHD-MA7-SA	: 12.35 kg / 27.227 lbs
ED 32T01 UHD-MA7-SP	: 12.7 kg / 28 lbs
VESA Support	100 x 100/100 x 200 [I x w] mm (4 x M4)

### Approvals & certificates

These products have been tested / type approved by the following classification societies:

FCC	CE
-----	----

### Signal Terminals

DVI Input	2 x 24p DVI (female) Max 3840x2160@30Hz (HDMI 1.4 compliant)
VGA Input	1 x 15p HD D-SUB (female) Max 1920x1200@60Hz
HDMI Input	1 x 19p HDMI (female) Max 3840x2160@30Hz (HDMI 2.0 compliant)
DP Input	1 x 20p DisplayPort (female) Max 3840x2160@60Hz DisplayPort 1.2a compliant
USB Up & Down	2 x USB2.0 type A Connector (female)
Touch Interface	1 x USB Type B Connector (female)
RS-232	1 x 9p D-SUB (female) non-isolated for remote control
RJ-45	1 x Ethernet RJ45, 8P8C, GPIO interface, for Remote Control (Use the ET JGW STD-A1)
DC Power Input	1 x 3-pin Terminal Block 5.08
AC Power Input	1 x Std IEC Inlet

### User Controls (On right side - Touch Keypad)

- Power On/Off (monitor)
- Brightness Control, backlight dimmable to 0 cd/m<sup>2</sup> (-/+)
- On Screen Monitor Menu
- Swap Source
- Picture in Picture
- Touch disable
- Navigation control (+/-)

### Environmental Considerations:

Operating	Temperature -5°C to +45°C
Storage	Temperature -10°C to +50°C
Humidity	Up to 95% (Operating / Storage)
IP Rating	Protection: IP65 front - IP22 Rest of unit
Backlight Lifetime	30000 hrs

### Lifetime Considerations:

Even though the test conditions for bridge units provide for a maximum operating temperature of 45°C, continuous operation of all electronic components should, if possible, take place at ambient temperatures of only 25°C. This is a necessary prerequisite for long life and low service costs.

### Available Accessories

ET JGW STD-A1	: 1 x ENIX Pro remote controller (RJ45 harness/encoder)
---------------	--

Please see user manual for more information

### Factory Options

- Projected Capacitive Touch Screen (Multitouch, USB interface)
- AG Coated Glass

### Available Models:

**ED 32T01 UHD-MA7-SA**  
32.0" ENIX Pro Monitor 4K ACDC Black Slim Frame AG MSCP

**ED 32T01 UHD-MA7-SP**  
32.0" ENIX Pro Monitor 4K ACDC Black Slim Frame PCTouch AG MSCP

**i** All specifications are subject to change without prior notice! Please visit [www.hattelandtechnology.com](http://www.hattelandtechnology.com) for the latest electronic version.

# TECHNICAL SPECIFICATIONS

**32.0 INCH ENIX PRO MONITOR - SERIES ED**  
ED 32T01 UHD-xxx-xx

## Contents of Package:

1 x CABLE POWER EU 1.83M

1 x CABLE HDMI 2.0(4K2K/60P) 1.8M


1 x DC PLUG

8 x PANEL MOUNTING CLAMP(M5\*50,SUS)

8 x SRCEW(M5\*8,ISO 4762,SUS)

1 x CABLE USB A TO B,1.8M<sup>[1]</sup>

<sup>[1]</sup>Only for Touch model

 All specifications are subject to change without prior notice! Please visit [www.hattelandtechnology.com](http://www.hattelandtechnology.com) for the latest electronic version.

This information may not, in whole or in part, be copied, photocopied, reproduced, translated or reduced to any electronic medium or machine-readable form without the prior written consent of Hatteland Technology AS. The products may not be copied or duplicated in any way.

**HATTELAND  
TECHNOLOGY**  
an EMBRON Company 

**i** Dimensions might be shown with or without decimals and indicated as mm [inches]. Tolerance on drawings is +/- 1mm. For accurate measurements, check relevant DWG file.

