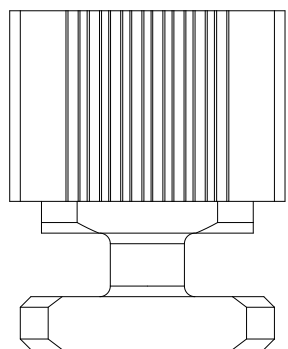
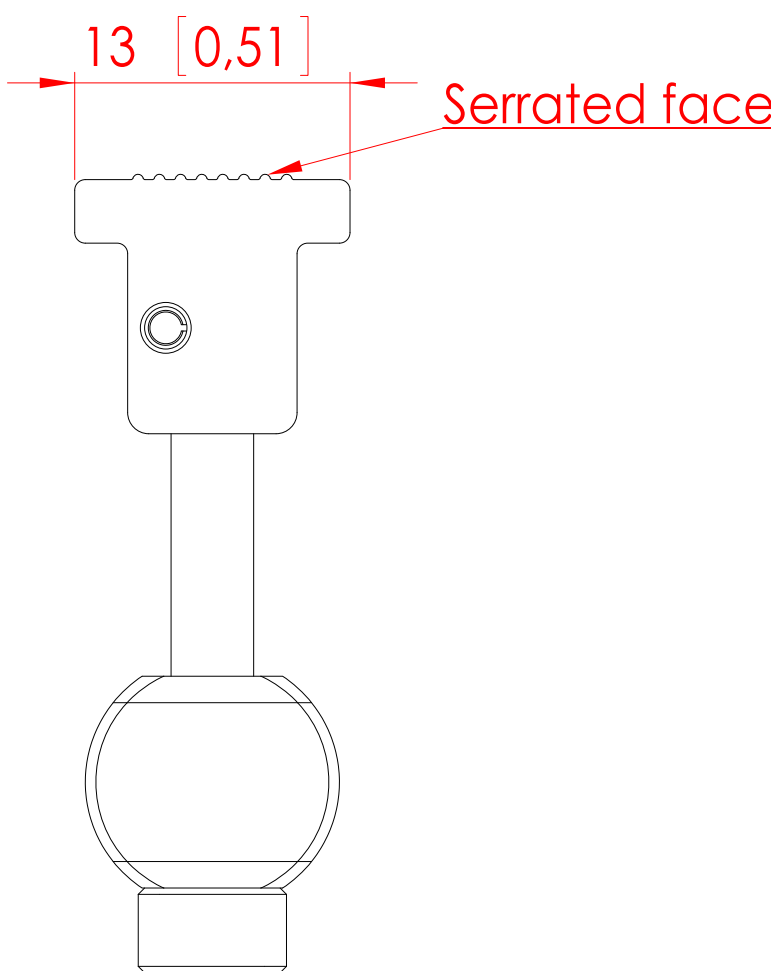


This document is the property of Hatteland Display AS.  
This document and any authorized reproduction thereof, must not be used in  
any way against the interest of Hatteland Display AS.  
Any authorized reproduction, in whole or in part, must include this legend.

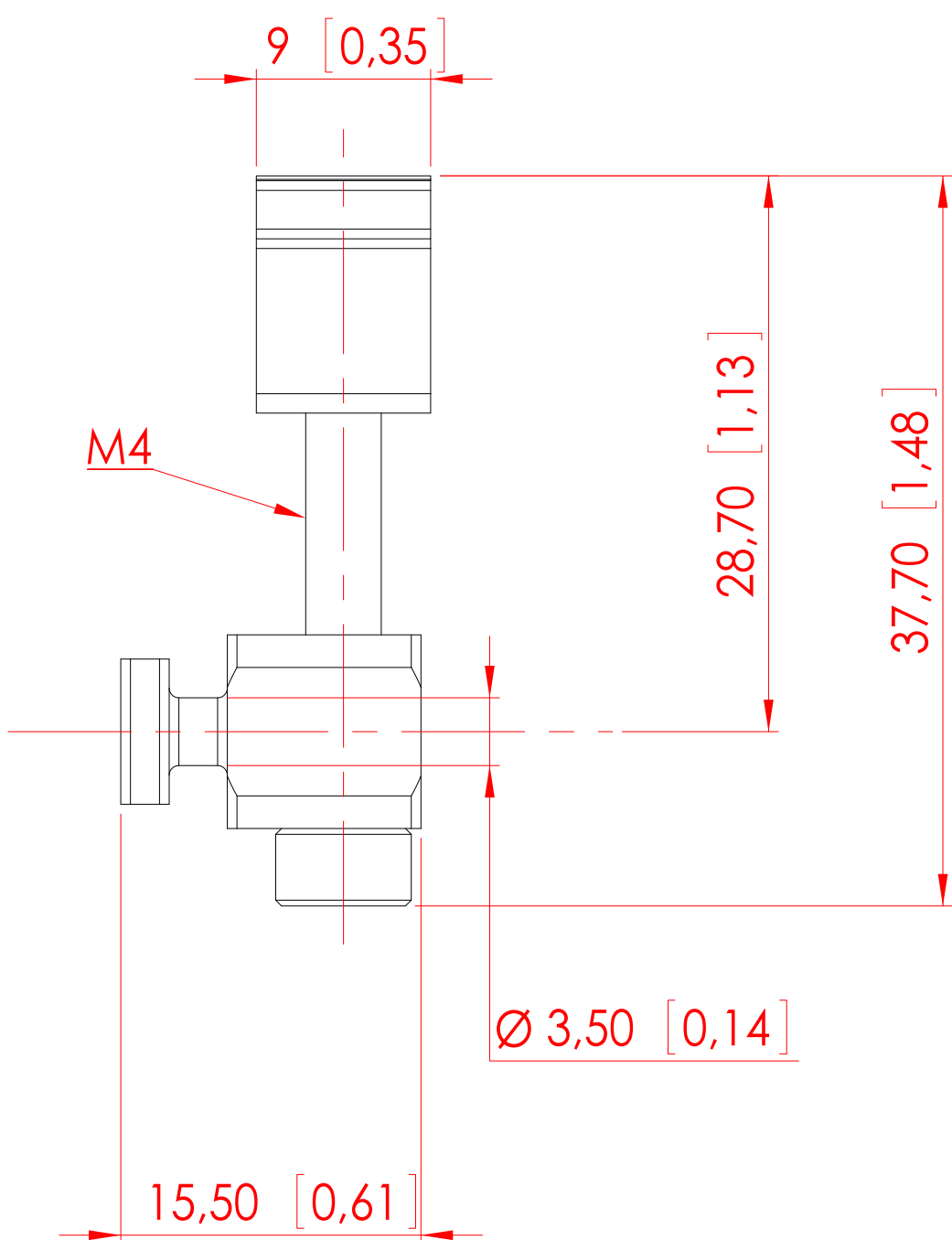
TOP



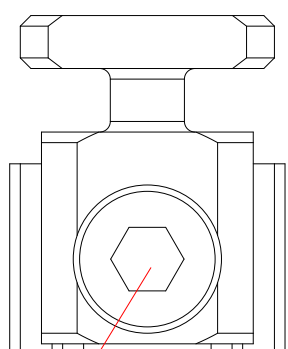
SIDE 1



SIDE 2

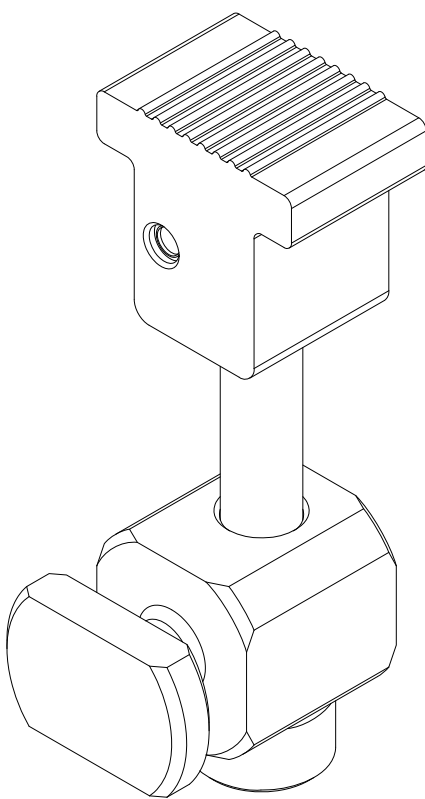


BOTTOM VIEW




M4 Nut Hex - Torque 2Nm

DIMETRIC VIEW



Units: mm [inches]

SALES DRAWING HD CMB SX1-A1 (CONSOLE MOUNTING KIT)  
Suitable for approx. Min-Max console plate thickness: 3.0 [0.12] - 12.00 [0.47] mm [inch]

Date:	Mechanical Designer	Projection	A2		HATTELAND® DISPLAY	
23.07.13	8629		Scale:	2:1		
Hatteland Display AS		Sheet 1 / 2	Colour code:	Approved by:		Revision:
Åmsosen			Surface treatment:	Drawing number:  A002560-1		
N-5578 Nedre Vats						