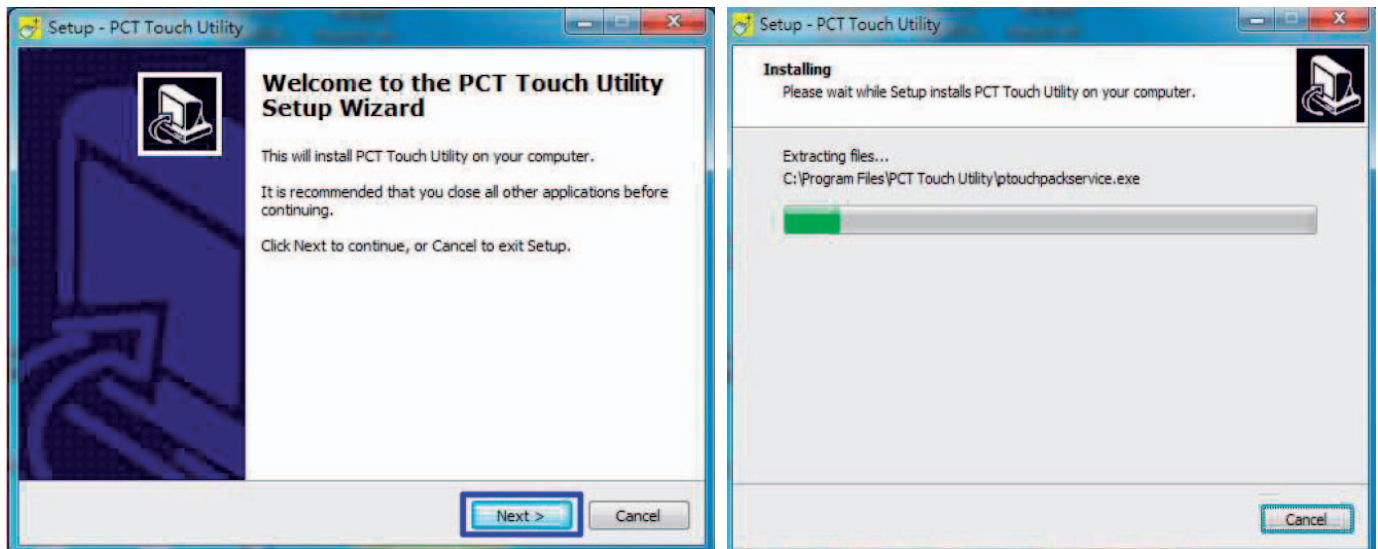


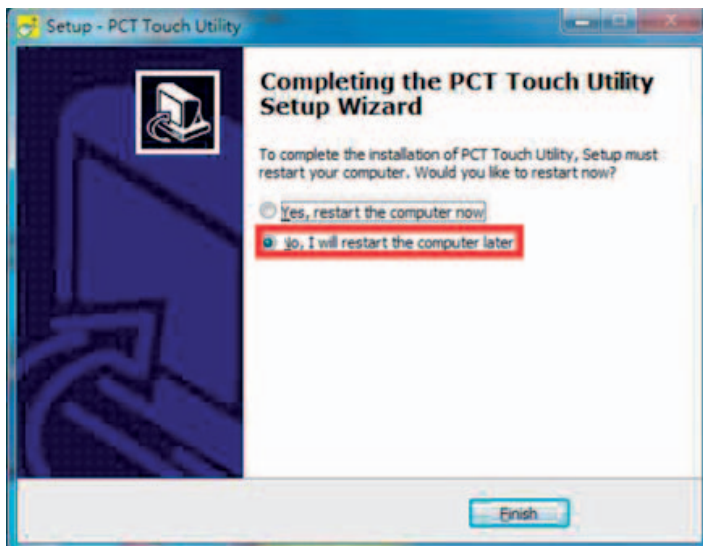
Install PCTS Utility Driver

1: Start PtouchUtility-1.0.0.4-150326.exe

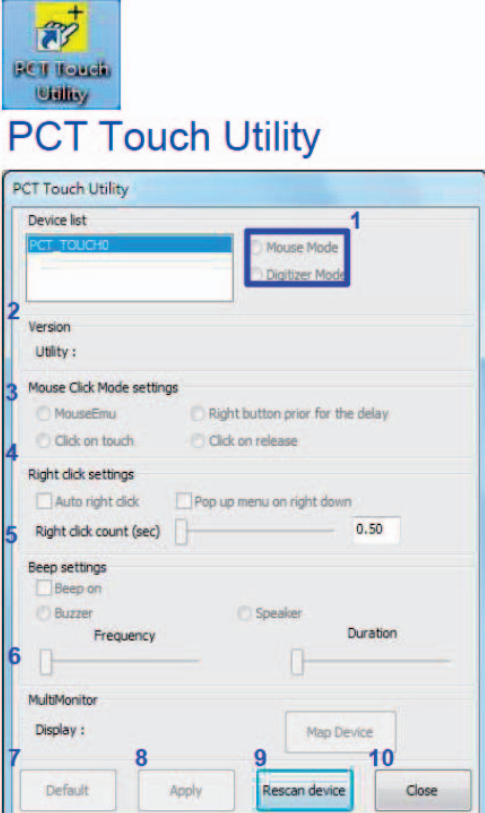


Note: For Microsoft® Windows® XP Embedded User, the installer may ask for "**mouhid.sys**". Please locate the file in "**C:\Windows\System32\drivers**", and continue as instructed.

2: Don't restart the PC when it is finished (choose as indicated in requester below), then proceed to step 3.



3: Start PCT Touch utility (via desktop icon or menu) to activate touch function. PCTS touch is in device list.



Item	Function
1.Mode Selection	AP support reported mode for mouse and digitizer Mouse Mode: Single Touch Digitizer Mode: Multi Touch
2.Version	The AP will display F/W information
3.Mouse Click Mode settings	Control mouse click mode Mouse Emu: emulation to mouse function Click on touch: touching TP is a click action Click on release: released TP is a click action Right button prior for the delay: emulation to right click for delay function
4.Right click settings	Control right click method
5.Beep settings	Control beep methods and enable beep
6.MultiMonitor	You can click on Map device to switch main monitor if you have two or more monitors
7.Default	AP will reload default value
8.Apply	AP will save to F/W for all settings
9.Rescan device	AP will rescan the device
10.Close	AP will be closed without storage

4: The user can customize the settings of touch controller in PCT Touch Utility.

Note: Mouse Mode should always be selected for Microsoft® Windows® XP.

5: Restart the PC.

Functional Check

1. Single Finger press

2. Right Click: Press and hold a single finger on the glass, for more than 1s. Release the finger and check if the right menu pops up.

Note: Even if Hardware and Touch Screen support Multi-touch internally, only Single Point touch mode is available for Microsoft Windows XP. To support Multi-touch, consider upgrading Operating System to Microsoft Windows 7 or above.