

# News Letter

Number: 04/01

## New 20.1 inch Industrial Display

Jakob Hatteland Display AS will release a new 20.1 inch, NEC based, industrial display in July 2001.

Our existing product:

**JH 20T01 M20-A1** (AC110-220V)

**JH 20T02 M20-A1** (AC110-220V)

are obsolete and will be replaced by the successors:

**JH 20T03 MMD-A1** (AC110-220V)

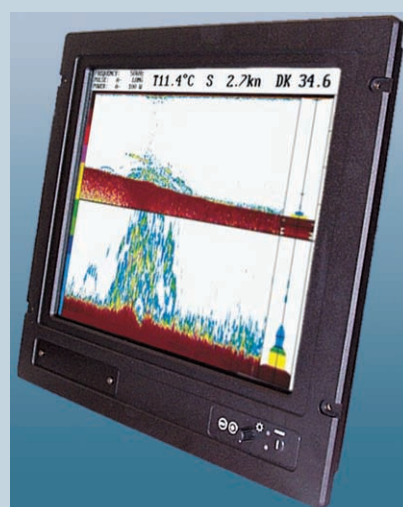
**JH 20T03 MMD-A2** (24VDC)

**JH 20T03 MMD-C1** (AC110-220V with touch screen)

**JH 20T03 MMD-C2** (24VDC with touch screen)

Accessory such as front bezel and cabinet are included in these products.

To use this new 20.1 inch display as a stand-alone display, instead of rack mounted, you will only need the suspension bracket type **JH 20TBR T03-01**



This new display will be tested according to the maritime standard **EN60945; 1996/11 (IEC945)** and will be type approved by the following classification societies:

- |                  |                                |
|------------------|--------------------------------|
| • <b>DNV</b>     | - Det Norske Veritas           |
| • <b>Lloyd's</b> | - Lloyd's Register of Shipping |
| • <b>GL</b>      | - Germanischer Lloyds          |
| • <b>Nippon</b>  | - Nippon Kaiji Kyokai          |
| • <b>ABS</b>     | - American Bureau of Shipping  |

Data sheet and drawing for this new product is available at our internet site:  
**<http://www.hatteland.com/jhd>**

We kindly ask you to enter these new type numbers for this new display in your information system when the delivery starts.